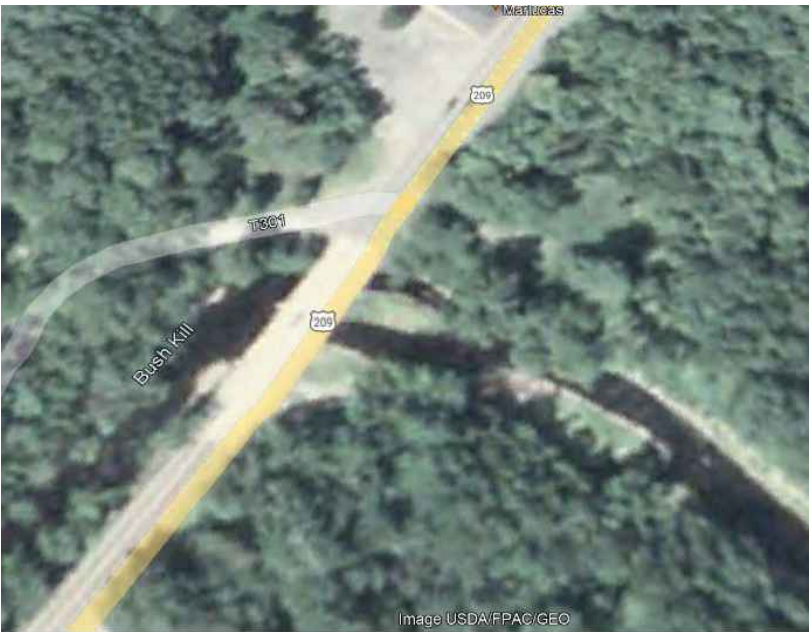




BUSHKILL CREEK AT US209
MARCH 1995



BUSHKILL CREEK AT US209
DECEMBER 2001



BUSHKILL CREEK AT US209
MAY 2008



BUSHKILL CREEK AT US209
MAY 2015



BUSHKILL CREEK AT US209
JUNE 2022

SITE OF PROJECT NP-DEWA 14(18), 121(1)
REHABILITATION & MAINTENANCE OF BRIDGES.
COMPLETED FEBRUARY, 2022.
(SEE APPENDIX FOR BUSHKILL CREEK PLANS.)

SEAL: _____

CONSULTANT(S): _____

ISSUE DATE: 10/31/23 DRAWN BY: EK DESIGNED BY: AN CHECKED BY: WC

REVISIONS:
NO. DATE REVISION:

PROJECT TITLE:
TASK 3 LEHMAN TWP
BUSHKILL GATEWAY STUDY
ROUTE 209 MIDDLE SMITHFIELD TWP

OWNER: _____

PROJECT NUMBER(S): 17035.11 SOURCE: SC

DRAWING TITLE:
BUSHKILL CREEK
PHOTO PROGRESSION

SHEET NUMBER: _____